



Fast and Easy

The Future of WiFi & Beyond in the City of Los Angeles

December 5, 2005

***Maryam Abbassi, Director of Planning and Policy
City of L.A. Information Technology Agency***



Agenda

- **Wi-Fi Municipal Trends**
- **Community Networks Across America**
- **Intel Digital Cities Initiative Vision**
- **Where we are Today**
- **Q & A**



WiFi Municipal Trends

- **12,000 hot spots in 2003 in U.S.**
- **72,000 hot spots by 2007**
- **30% increase in just 5 months**
- **64 cities installed municipal Wi-Fi**
- **12 planned projects underway**

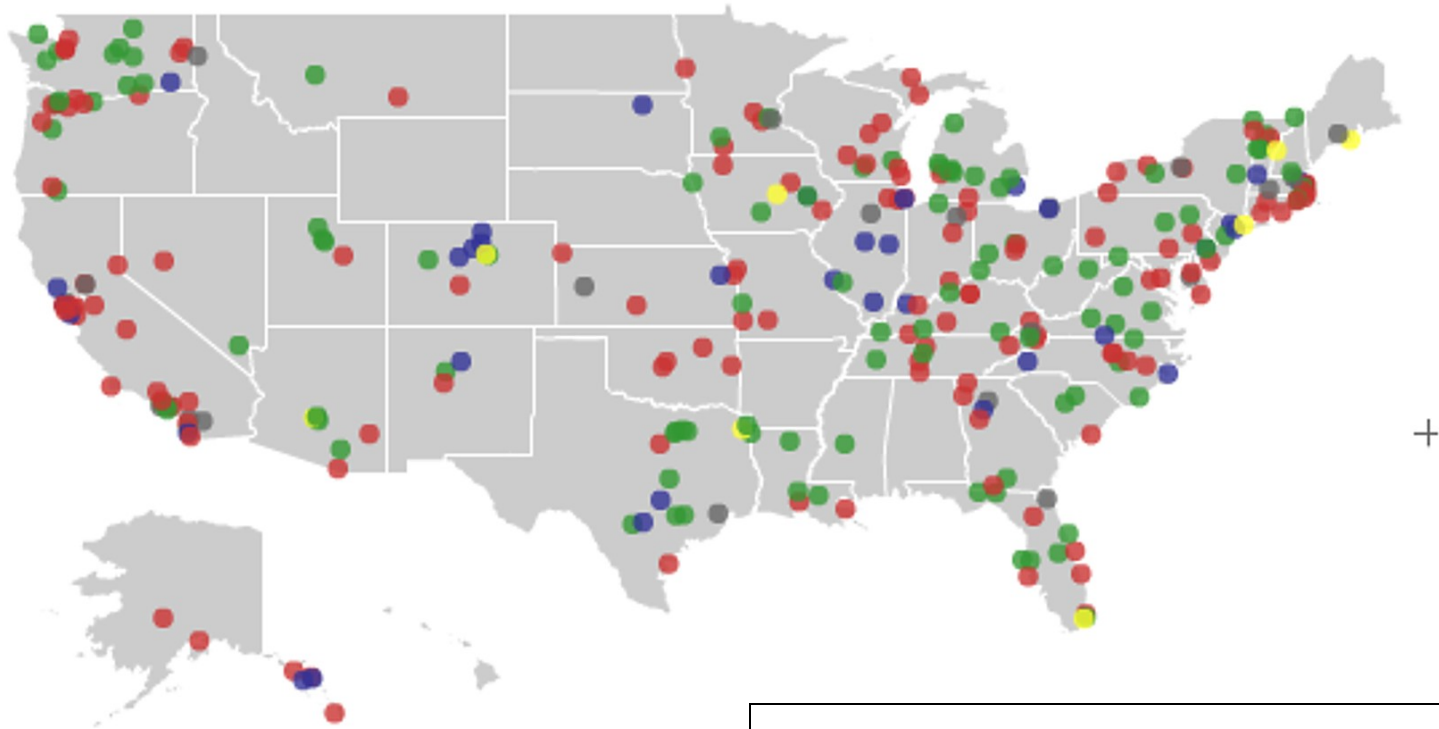
Source: March 2005 MuniWireless Report



Wide Range of Municipal Wi-Fi Examples

- **City or County owned**
- **Local Utility model**
- **City or utility leases capacity on backbone network to ISP**
- **City provides incentives for development of wireless network, i.e. eases regulations for pole attachments**

Community Networks Across America



- | | |
|--------------------|-----------------------|
| Red dot: | Government-owned |
| Blue dot: | NGO-owned |
| Yellow dot: | Privately owned |
| Green dot: | Mixed/joint ownership |
| Grey dot: | Unknown/other |

Source: Freepress.net
10/14/05

<http://www.freepress.net/communityinternet/networks.php>

Intel Digital Cities Initiative Vision

http://www.intel.com/business/bss/industry/government/digital_demo/flash.htm





Los Angeles WiFi & Beyond Executive Panel

➤ **March 2005 -**

Panel delivered a strategic vision on how L.A. will lead the way in implementing WiFi and next generation technologies with recommendations to the Mayor

➤ **November 2005-**

Discussing municipal wireless policy direction with Mayor Villaraigosa's Administration



Where We Are Today

- Public Safety Focus
- Public Wi-Fi Pilot Sites
 - ✓ Valley - Van Nuys Civic Center
 - ✓ Pershing Square, Little Tokyo
 - ✓ 38 Libraries (expanding to all 72 branch locations)
 - ✓ Establishing Partnership with Schools (LAUSD)
- Wi-Fi Service at Some Facilities
 - ✓ Los Angeles Convention Center
 - ✓ Los Angeles Airports
- Organize City assets for telecom leasing



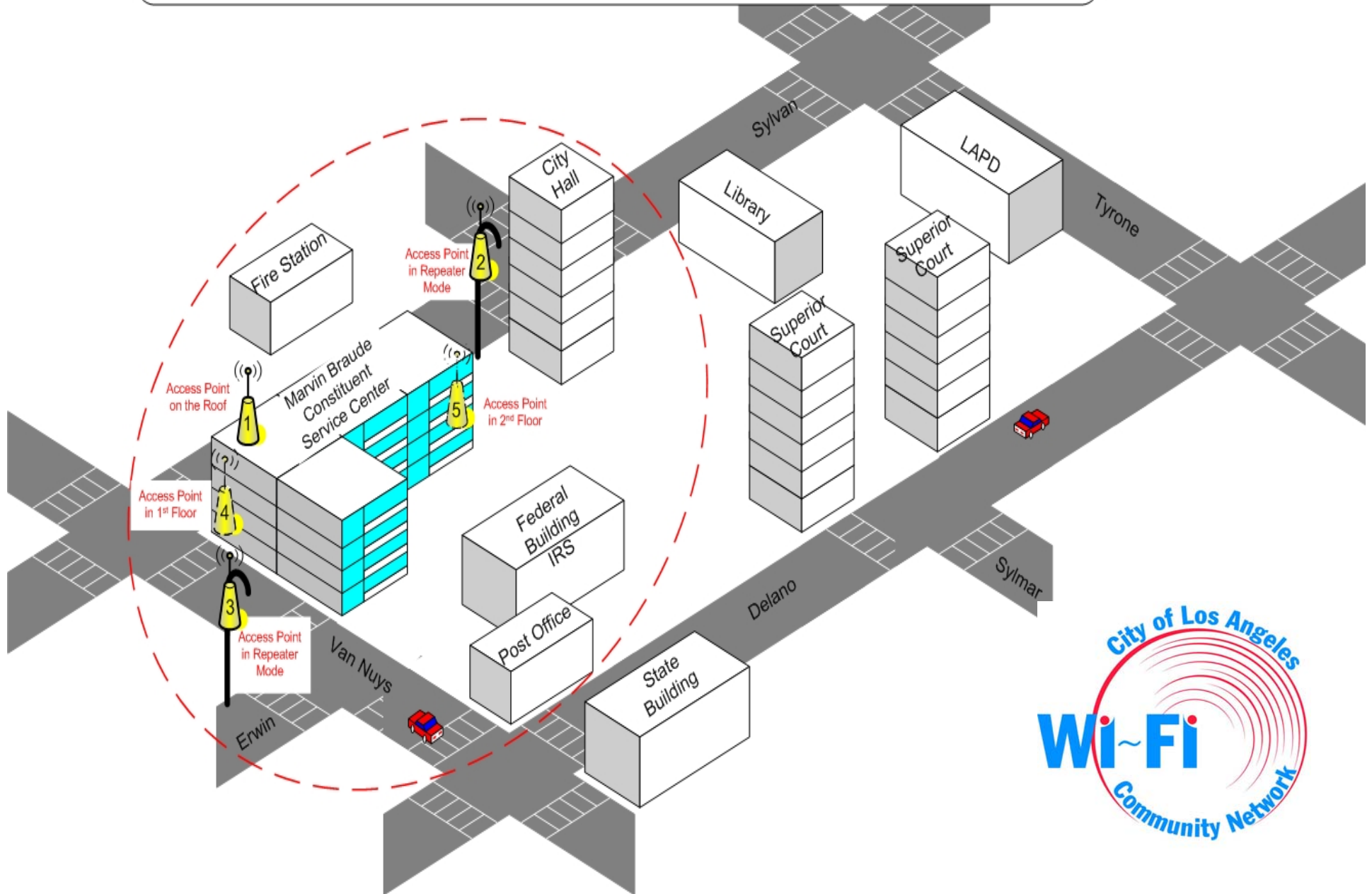
Van Nuys Civic WiFi Partners

- ITA - Project planning and management
- Department of Water and Power – Backhaul link to ISP
- Bureau of Street Lighting – Pole Attachments and power
- Department of General Services – Rooftop and building access
- Aiirmesh – Equipment network support
- Fiber Qwest – Internet Service Provider
- CRA - “Experience LA” entry page content

Van Nuys Civic Center WiFi Network Installation Phase

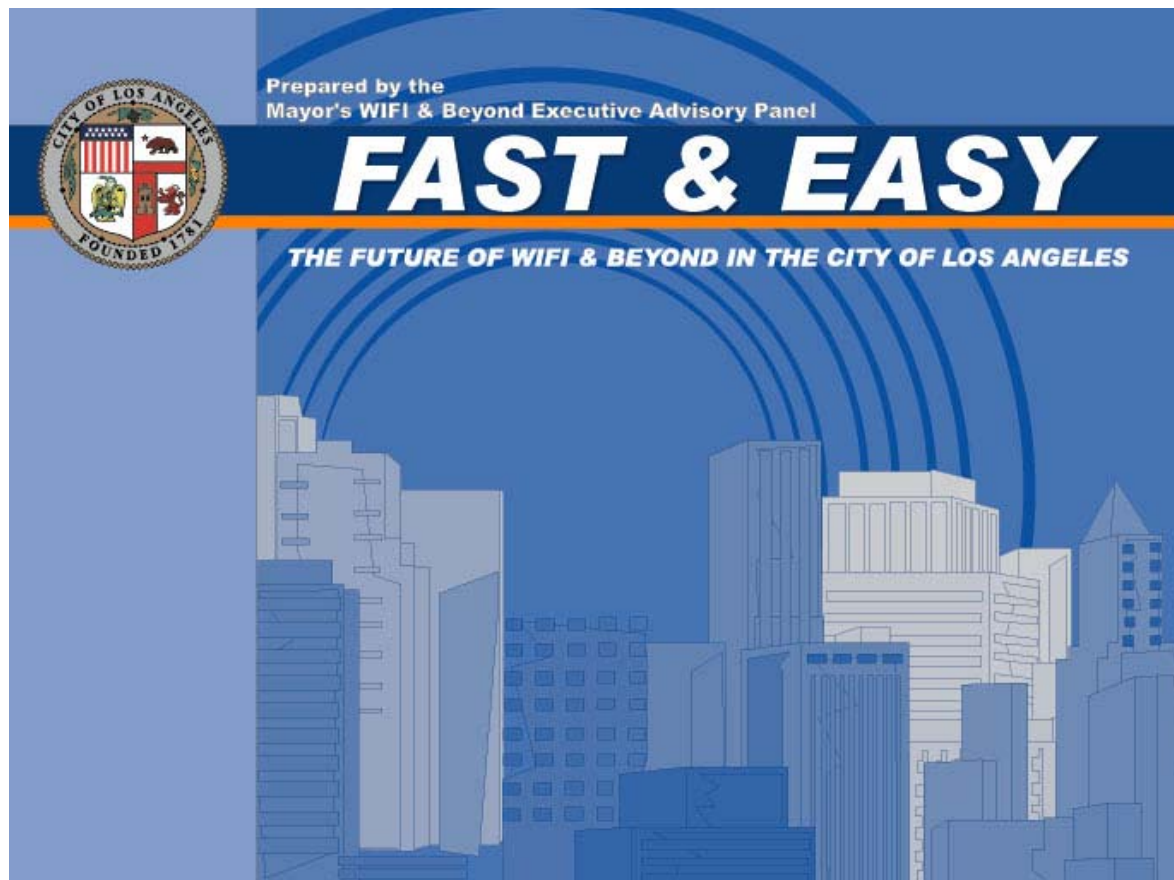


Marvin Braude Wireless Internet Access District



WiFi & Beyond Panel Report

<http://www.lacity.org/ita/> (click on reports)





The Future of WiFi & Beyond in the City of Los Angeles



Questions....